

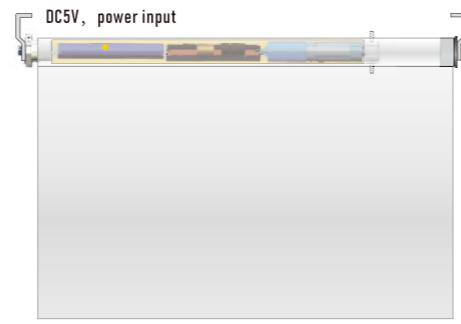
# MOTOR PROGRAM INSTRUCTION

Version 2.0



## MOTOR FEATURES

- Energy saving design, powered by large capacity Li-ion battery; Motor can be control by RF remote and APP control via Bluetooth communication protocol
- Easy operation intelligent motor; Motor program settings can be do either by remote or by smart phone APP
- Patented smooth and quiet design; soft start and soft stop; running noise level lower to 35dB
- Low battery warning mode remind customer to charge motor in time
- motor can set 6 limits, include top/bottom limits and 4 favorite intermediate limits
- various user friendly features on APP control via Bluetooth



## POWER SOURCE & CHARGING

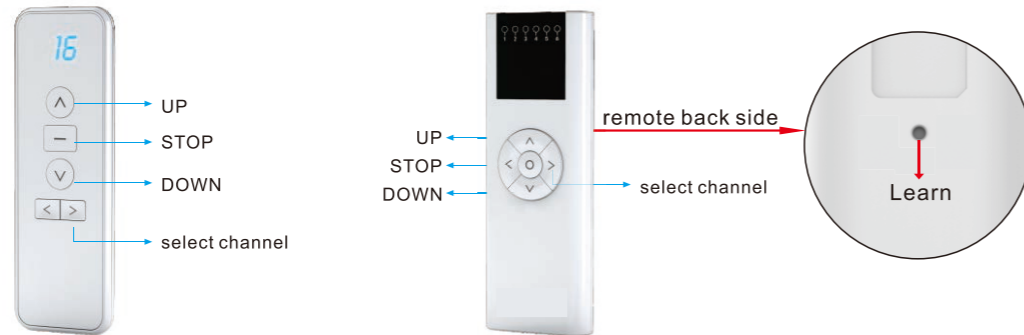
- Built-in Li-ion battery supply. Recharged using an external charging kit include a charger block and one USB-C charging cable.
- Motor one full charge ca be used for 4-6 months vary with shade use frequency.
- Charging time is 6-8 hours;

**Tips:**  
 1. For longer life service of the motorized shade, we suggest all li-ion battery motor need to charge battery every 6 months to avoid battery over discharge  
 2. Please charge the motor for around 6 hours until you see the green light before first use



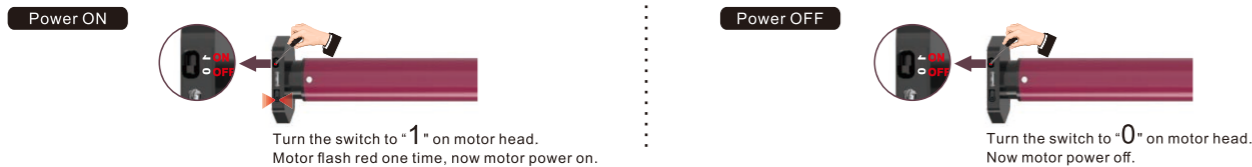
## Motor setting instruction

### Remote illustration



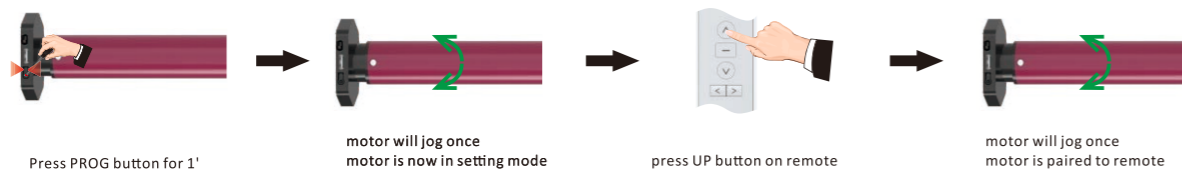
### 1. Power ON/OFF

\* After switching off power, the motor will not be able to receive remote signals.

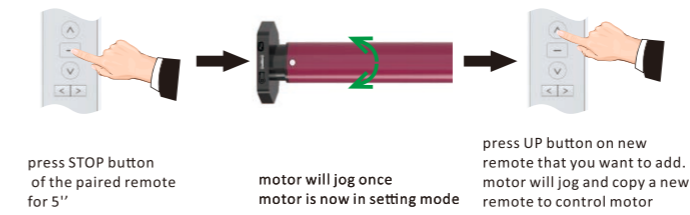


### 2. Pairing remote

\* If there is no action in 10 seconds, the motor will exit programming automatically.

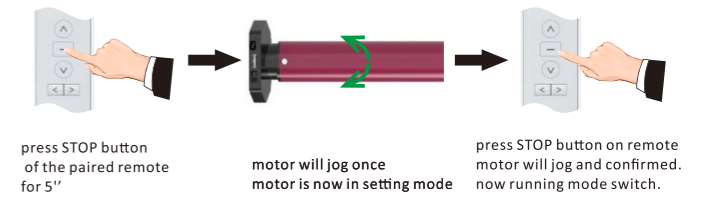


### 3. Copy new remote

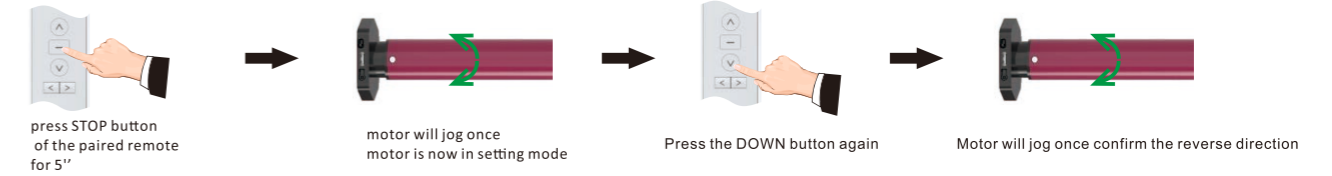


### 4. Change running mode (two modes)

(Continuously mode: when you hit the up/down button, motor will immediately run to next limit)  
 (Jogging move mode: when you hit the up/down button less than 1", motor only jog, keep press for more than 1", motor will keep running)



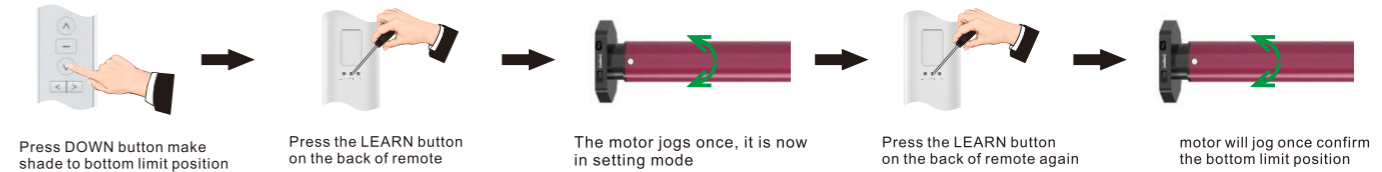
### 5. Change direction



### 6. TOP limit setting

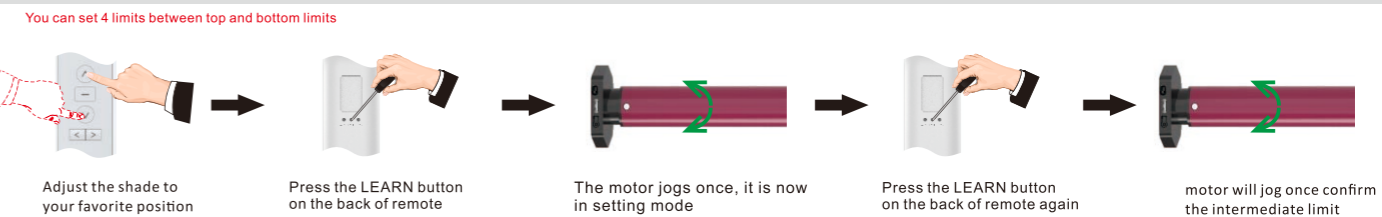


### 7. Bottom limit setting

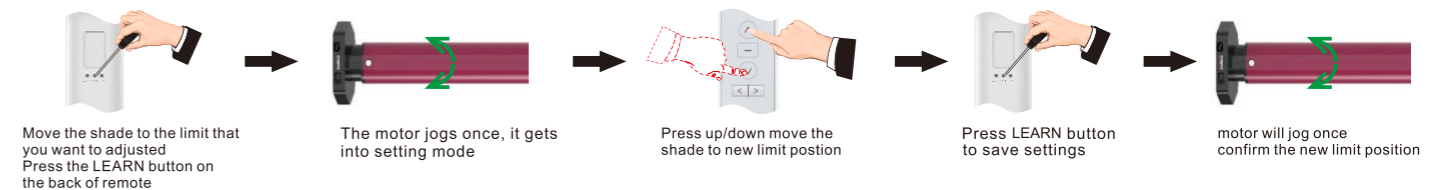


### 8. Other limit position setting

\* If there's no any action within 30's, the motor will exit from limit position preparation automatically

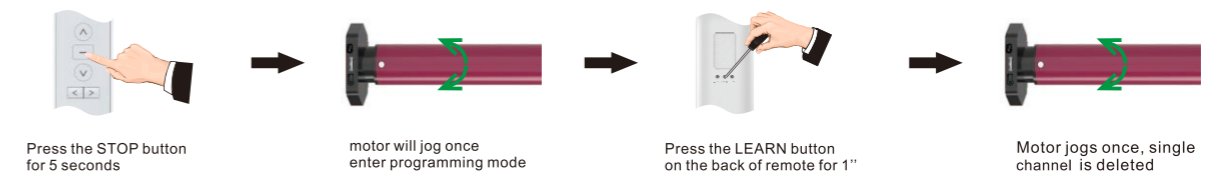


### 9. Limit position fine-tuning



### 10. Delete Single Channel program

(if you want to remove one channel's setting, pls do as follow)

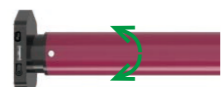


## 11. Delete the limit position

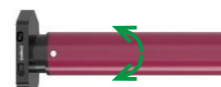
tips: the first limit can't be deleted until you delete all the settings (restore to factory mode)



Let the shade run to the limit position which needs to be deleted, press LEARN for 7s



The motor jogs once after 1s then goes into setting mode



The motor jogs once again after 7s, the preset limit position is now deleted

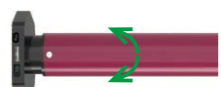
## 12. Delete all settings (restore to factory mode)

(Two methods, one on the remote, another one on motor head)

### Method A



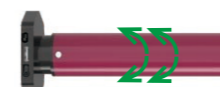
Press STOP of the programmed remote for 5s



motor will jog once enter programming mode



keep holding the LEARN button for 7s



motor will jog one time at the 1st second and jog two times at the 7th second. now motor delete all settings

### Method B



press the PROG button for 1s motor head will flash red 1 time then release your hand



press the PROG button for 1s motor head will flash red 1 time then release your hand



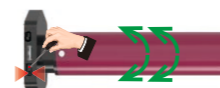
keep holding for around 3s  
LED will flash red at the 1st second  
LED will flash red at the 3rd second  
then release the hand



keep holding for around 3s  
LED will flash red at the 1st second  
LED will flash red at the 3rd second  
and motor jog twice then release the hand



keep holding the PROG for around 3s  
LED will flash red at the 1st second  
LED will flash red at the 3rd second  
then release the hand



keep holding the PROG again for around 3s  
LED will flash red at the 1st second  
LED will flash red at the 3rd second  
and motor jog twice then release the hand

## 13. Put motor to bluetooth pairing mode

\* Make sure the interval between every actions less than 1s

when you receive your motor, usually you don't need to reset motor Bluetooth. Just open your APP and scan devices, the APP will automatically scan the Bluetooth motor around you. If your APP can't find the Bluetooth motor around you, then you can reset the motor Bluetooth. Motor will refresh the Bluetooth signal.



press the PROG button for 1s motor head will flash red 1 time then release your hand

press the PROG button for 1s motor head will flash red 1 time then release your hand

press the PROG button for 1s motor head will flash red 1 time then release your hand

press the PROG button for 1s motor head will flash red 1 time then release your hand

keep holding for around 3s  
LED will flash red at the 1st second  
LED will flash GREEN at the 3rd second



keep holding the PROG again for around 3s  
LED will flash red at the 1st second  
LED will flash GREEN at the 3rd second  
and motor slow flash green for 30s

## Supplemental Instruction

- Max. 6 limit stop positions. (Upper limit/ Lower limit and 4 intermediate limit positions)
- When the first limit position is the up limit position, all other limit positions can only below this position; the same thing, when the first limit position is the down limit position, all other limit positions can only be set above this position. can't be delete
- Every limit position can be fine-turned or deleted separately (the first limit position can only be fine-tuned but can't be deleted separately. It can be deleted when delete all memories)
- Under the jog mode, short press the up or down button, motor jogs once. Press the up or down button for more than 1s, and the engine moves to the limit
- Under the continuous move mode, quickly press the up or down button twice on the transmitter, and the motor will go directly to the up or down limit stop position without stopping at the middle limit position.
- The light is red when charging and will turn to green when fully charged.

### Battery shortage alarm:

The motor will step into jog mode and continuously beep when the battery capacity is below 6.8V, which means you must charge the motor now.

### Trouble Shooting

Item	Problem	Matter	Shooting
1	The motor doesn't work and no any move	A. Power is cut off B. Shortage voltage protection C. Incorrect installation leads to motor sticking	A. Switch it on by button B. Start the motor after charging it for 6 hours C. Check and make sure all parts are installed properly
2	The motor stops suddenly during operation	A. Shortage voltage protection B. Protect the motor when encounter obstacle	A. The motor will resume to work after being charged B. Check if there is something stuck or overloading

## Bluetooth Motor Setting Instruction

Scan to download "Smart Life" APP



**Smart Life - Smart Living** (4+)   
 Smart Living   
 Volcano Technology Limited   
 #46 in Lifestyle   
 4.7 • 265.2K Ratings   
 Free - Offers In-App Purchases

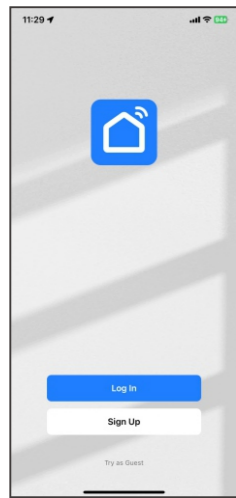


Apple Store(iOS)

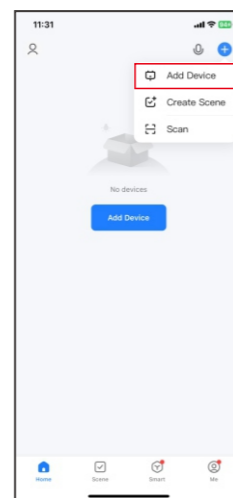
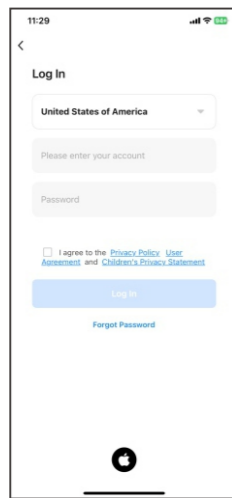


Google Play(Android)

## Add Bluetooth motor to Smart Life APP



1. Register and login "Smart Life" APP



2. Add device, refer to red part.

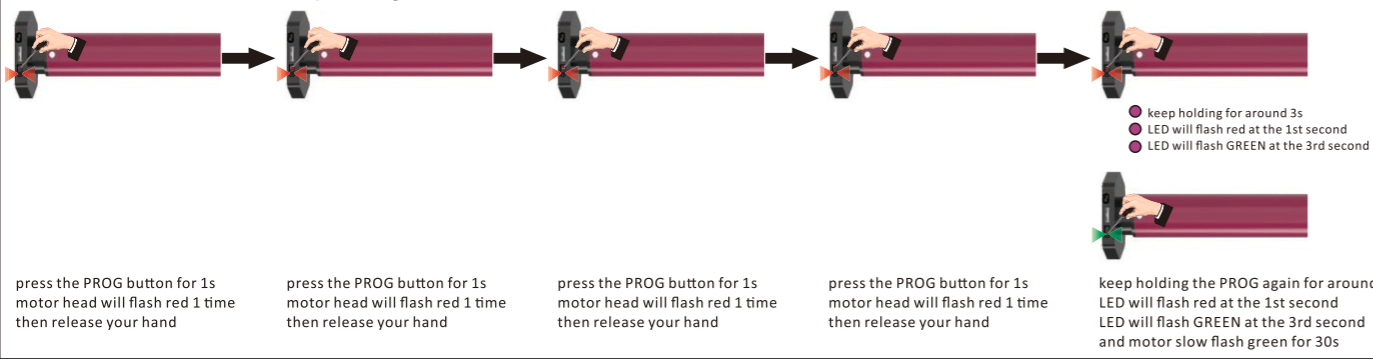
After you choose "Add Device", now you put motor in Bluetooth pairing mode.

Please refer to below instruction.

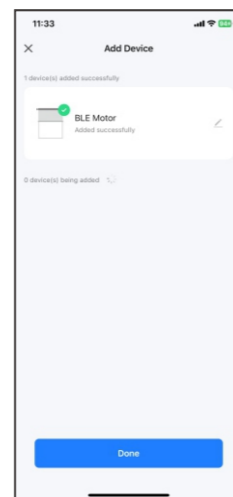
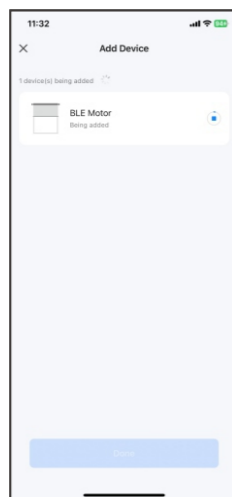
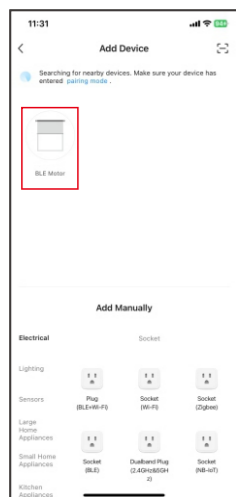
there are two methods to add motors to Smart Life APP

1. Auto scan adding
2. Manually adding

### Put motor to Bluetooth pairing mode

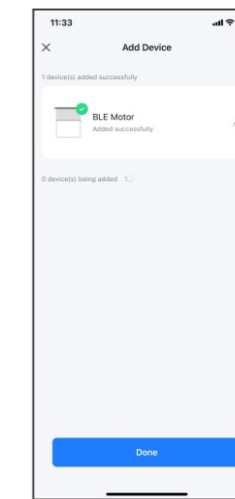
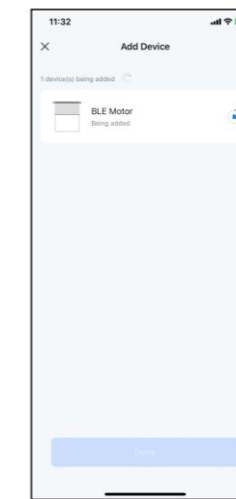
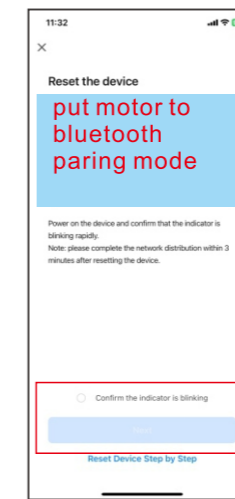
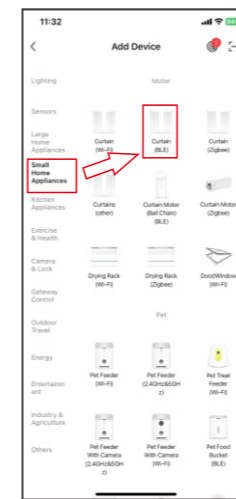


## Method 1: Auto scan adding device

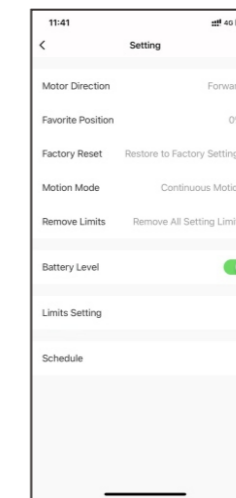
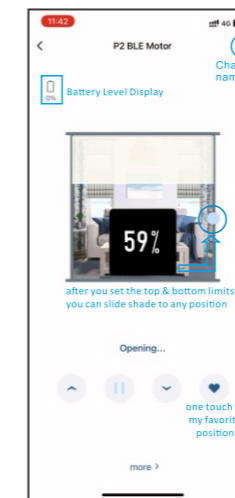


after you put motor into bluetooth pairing mode, the smart life APP will auto scan devices nearby you. Choose the device that you want to add and then the APP will automatically add devices

## Method 2: Manually adding device



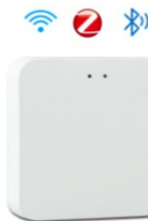
1. go to "Small Home Appliances" on left; choose "Curtain (BLE)"
2. Put motor to bluetooth pairing mode; "Confirm the indicator is blinking", then "NEXT"
3. Smart life APP will scan the devices nearby you and add automatically till you see "Done"



- Motor Direction: Forward > Reverse motor running direction
- Favorite Position: 0% > Set favorite position (you need to set up/down limit first)
- Factory Reset: Restore to Factory Settings > Restore to factory mode
- Motion Mode: Continuous Motion > Switch the motor running mode (continuous/tilting mode)
- Remove Limits: Remove All Setting Limits > Remove all the limits
- Battery Level: [On] > Show battery level currently
- Limits Setting: > Set the upper and bottom limits of the shade
- Schedule: > Schedule a timer setting (you have to need a hub to achieve timer setting)

## Add Mini-Multi Gateway -Hub to Smart Life APP

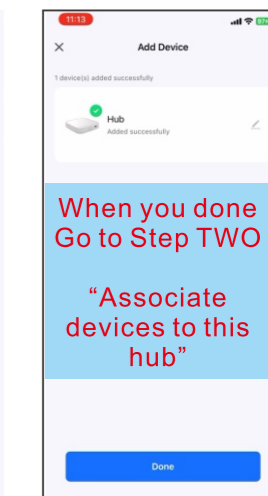
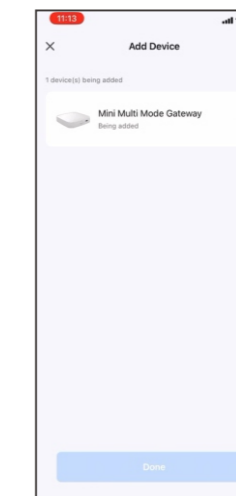
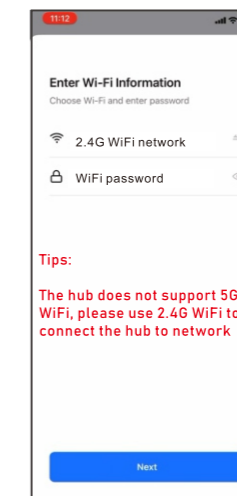
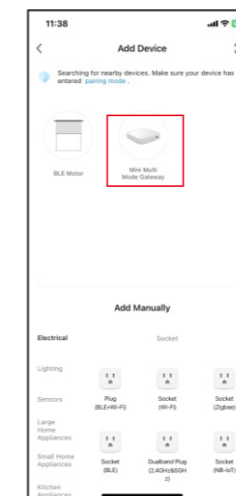
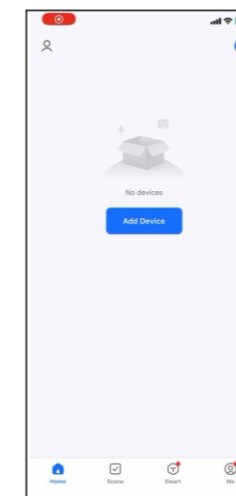
(To achieve remote access control shades outside your home, you must need to buy a Bluetooth Gateway Hub)



1. Power on Mini-Multi gateway hub
2. there are two indicator on the hub; ---when blue LED keep lighting, red LED slowly blinking, mini hub is in pairing mode ---After you successfully add the mini hub to Smart Life APP, blue and red LED will keep lighting on you can keep holding reset button around 30 seconds; it will turns to blue light is on, red blinking; if you can't see that signal, keep pressing the reset button for another 10 seconds; once the hub reset, the hub will remove from your APP and

there are two methods to add the mini hub; 1. auto scan adding; 2. manually adding

## Step ONE---Method 1: Auto scan adding hub



1. Register and login "Smart Life" APP
2. Click "Add Device", the APP will search devices.
3. When the APP discover the hub, choose "Add"
4. Choose 2.4G WiFi and input WiFi password to enable the hub to network.
5. Click "Next", the APP will automatically add the hub. When the hub successfully added, click "Done"

**Tips:**  
The hub does not support 5G WiFi, please use 2.4G WiFi to connect the hub to network

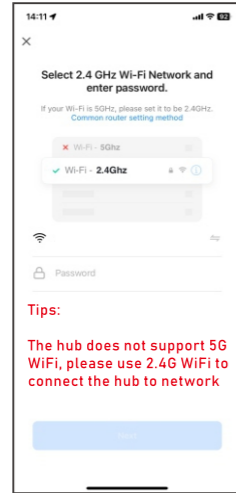
When you done Go to Step TWO

"Associate devices to this hub"

## Step ONE---Method 2: Manually adding device



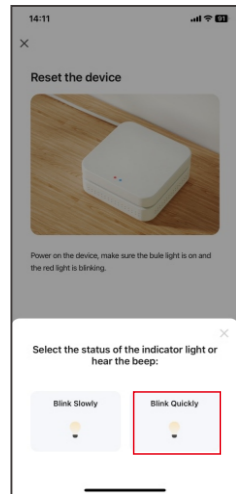
go to "Gateway Control"  
Choose "Wireless Gateway (Zigbee)"



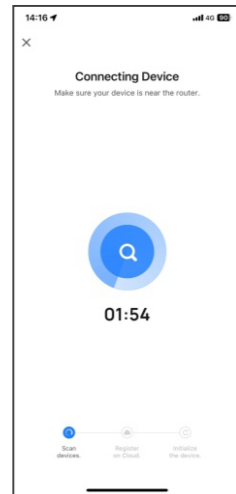
Choose WiFi  
input password  
Tap "Next"



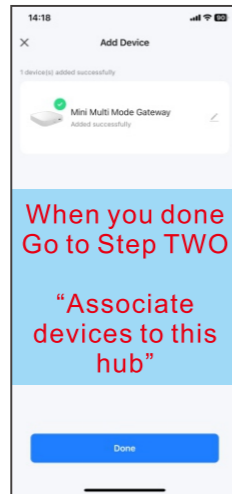
"Confirm the indicator is blinking"  
*the hub's blue light is on and red light is blinking*



Choose "Blink Quickly"

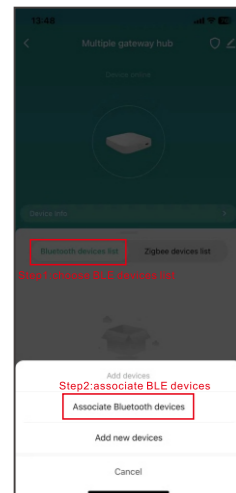


Smart life APP will scan the device and try to connecting hub

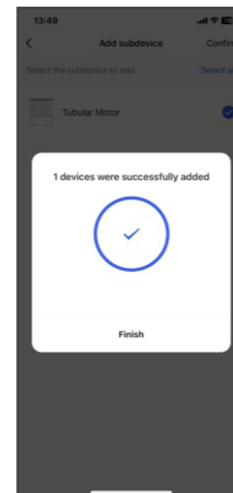
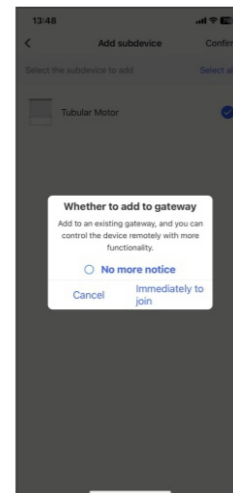


When you done  
Go to Step TWO  
"Associate devices to this hub"

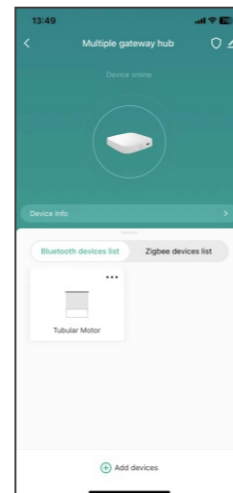
## Step TWO: Associate devices to your hub



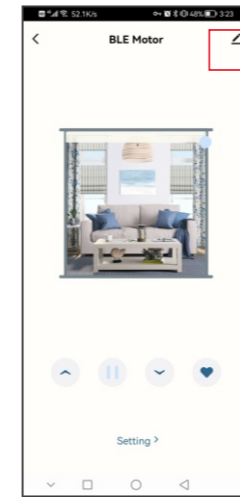
6. Choose "Bluetooth devices list"
7. Click "Add Device".
8. Choose "Associate Bluetooth devices"
9. Select all devices



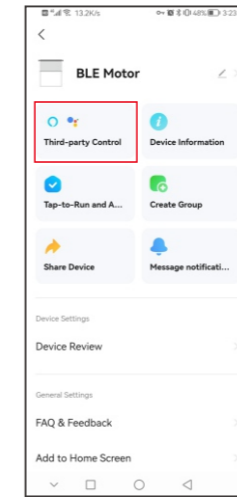
10. Click "Immediately to join"  
then these shades will bonded to this hub
11. Now you can control your shades outside home



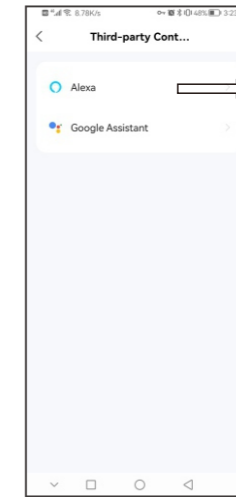
## Third Party Control Instruction--Alexa & Google Assistant



Access to shade control menu  
Tap red box as above

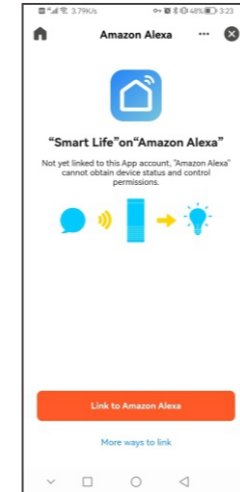


Choose "Third-party Control"

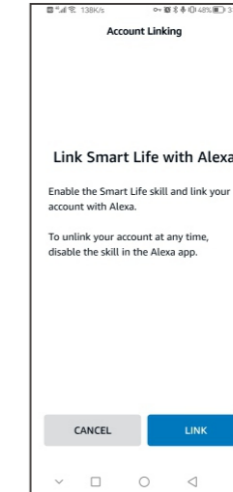
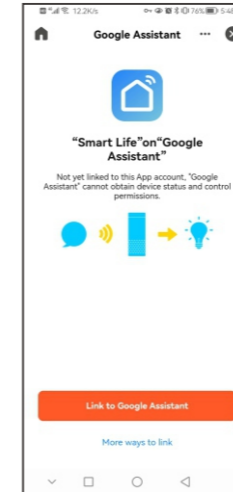


There will be two options  
Alexa & Google Assistant

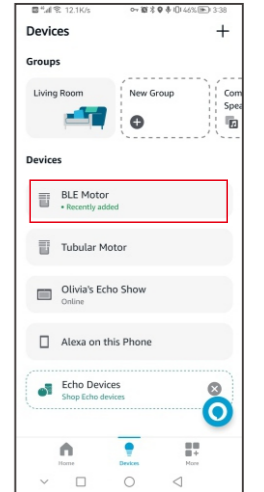
Tips: Alexa voice command  
Alexa, open "shade one"  
Alexa, close "shade one"  
Alexa, set "shade one" to 50%



Choose  
"Link to Amazon Alexa"  
"Link to Google Assistant"



Choose "Link"  
then it will enable your Smart Life account to third parties account



Now you can discover your devices on third parties APP